

WOOD SHAPER

WS-3/4A

ASSEMBLY and OPERATING INSTRUCTIONS

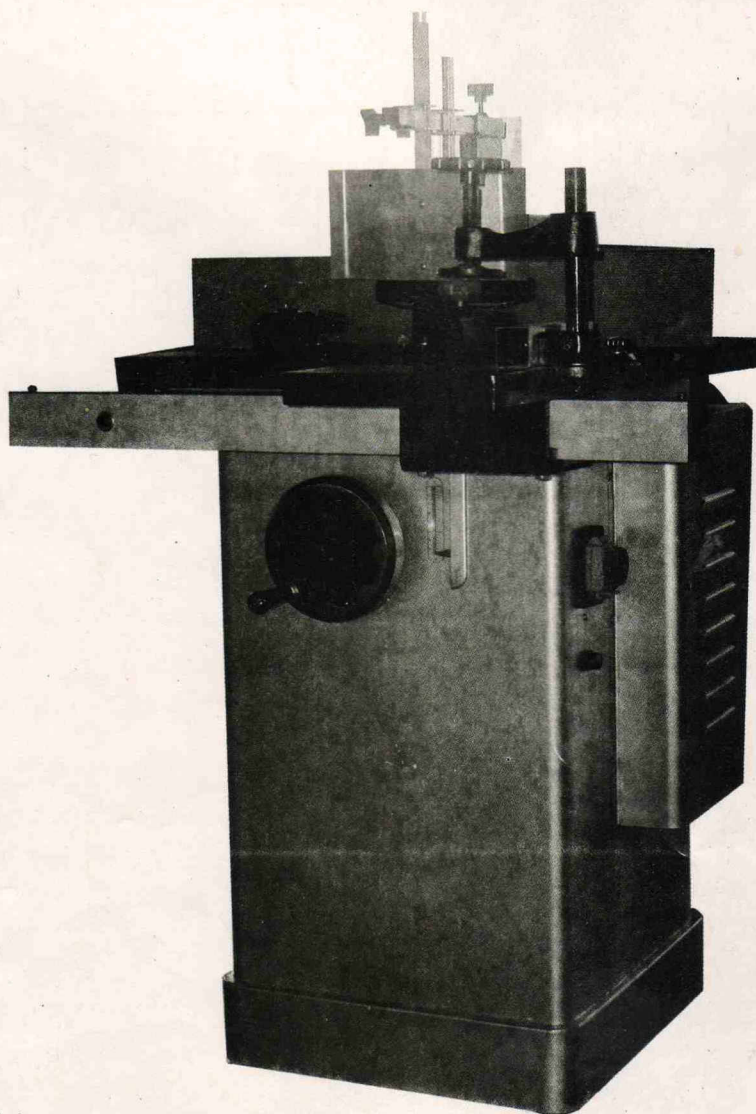


TABLE OF CONTENTS

Specifications -----	2
Safety warnings and precautions-----	2
Operation -----	4
Pre-shaping Adjustments-----	5
Maintenance -----	5
Parts List-----	6
Assembly Drawing-----	8

ITEM	DESCRIPTION
Motor	3450 2800 RPM,1-1/2HP
Spindle	7000-10000 5800-8300 RPMS; Diameter: \varnothing 30mm
Spindle Travel	75mm
Drive System	Belt
Power	110V、220V、380V 60HZ、50HZ
Work Table Size	610 × 534 × 34mm
Fence Size	300 × 110mm

Save This Manual

You will need the manual for the safety warnings and precautions, assembly instructions, operating and maintenance procedures, parts list and diagram. Keep your invoice with this manual. Write the invoice number on the inside of the front cover. Keep the manual and invoice in a safe and dry place for future reference.

Safety Warnings and Precautions

WARNING: When using tool, basic safety precautions should always be followed to reduce the risk of personal injury and damage to equipment.

Read all instructions before using this tool!

1. Keep work area clean. Cluttered areas invite injuries.

2. Observe work area conditions. Do not use machines or power tools in damp or wet locations. Don't expose to rain. Keep work area well lighted. Do not use electrically powered tools in the presence of flammable gases or liquids.

3. Keep children away. Children must never be allowed in the work area. Do not let them handle machines, tools, or extension cords.

4. Store idle equipment. When not in use, tools must be stored in a dry location to inhibit rust. Always lock up tools and keep out of reach of children.

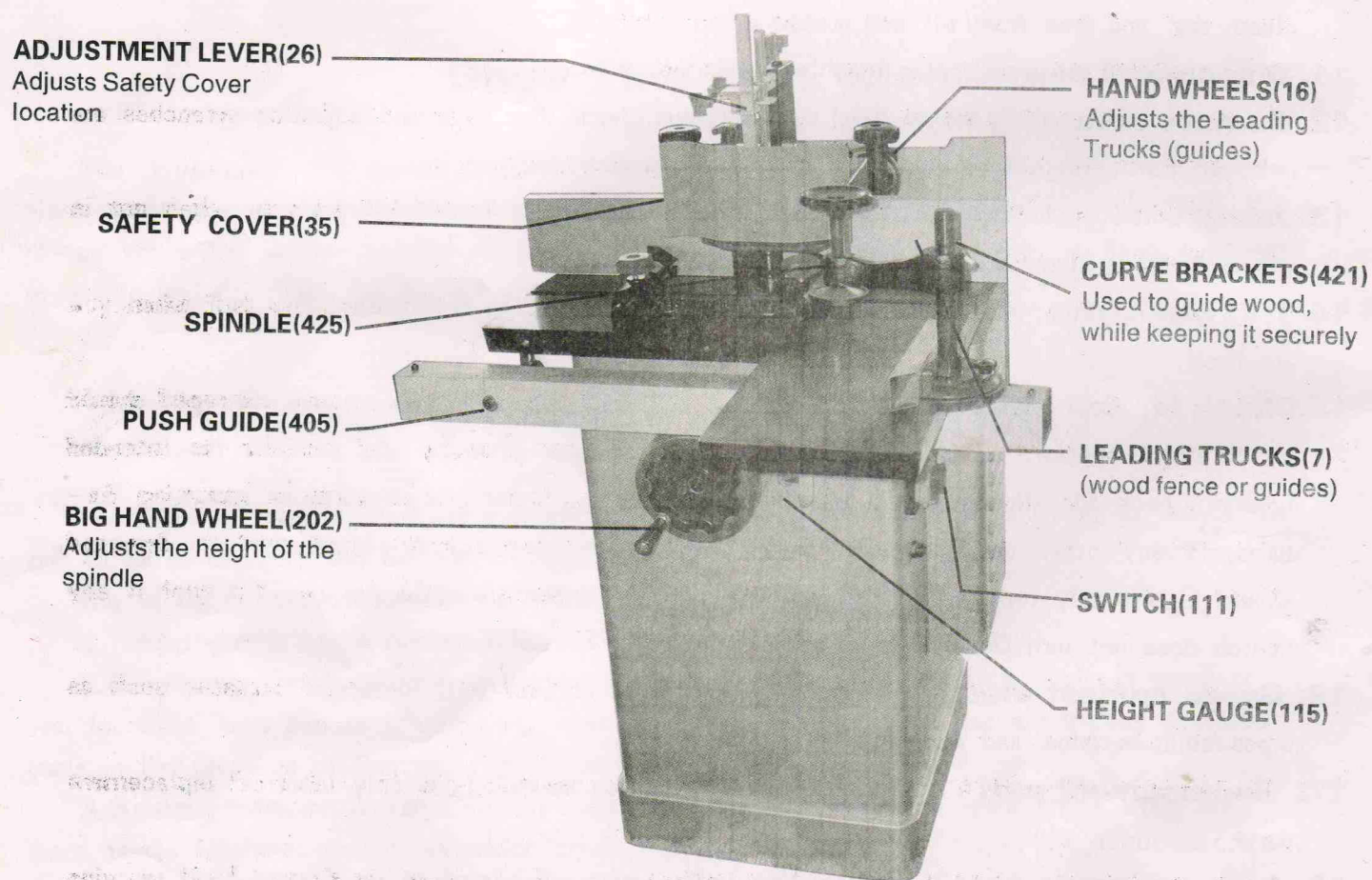
- 5. Do not force tool.** It will do the job better and more safely at the rate for which it was intended. Do not use inappropriate attachments in an attempt to exceed the tool capacity.
- 6. Use the right tool for the job.** Do not attempt to force a small tool or attachment to do the work of a larger industrial tool. Do not use a tool for a purpose for which it was not intended.
- 7. Dress properly.** Do not wear loose clothing or jewelry as they can be caught in moving parts. Protective, electrically non-conductive clothes and non-skid footwear are recommended when working. Wear restrictive hair covering to contain long hair.
- 8. Use eye and ear protection.** Always wear ANSI approved impact safety goggles. wear a full face shield if you are producing metal filings or wood chips. Wear an ANSI approved dust mask or respirator when working around metal, wood, and chemical dusts and mists.
- 9. Do not overreach.** Keep proper footing and balance at all times. Do not reach over or across running machines.
- 10. Maintain tools with care.** keep tools sharp and clean for better and safer performance. Follow instructions for lubricating and changing accessories. Inspect tool cords periodically and, if damaged, have them repaired by an authorized technician. The handles must be kept clean, dry, and free from oil and grease at all times.
- 11. Disconnect power.** Unplug machine when not in use.
- 12. Remove adjusting keys and wrenches.** Check that keys and adjusting wrenches are removed from the tool or machine work surface before plugging in.
- 13. Avoid unintentional starting.** Be sure the switch is in the Off position when not in use and before plugging in.
- 14. Stay alert.** Watch what you are doing, use common sense. Do not operate any tool when you are tired.
- 15. Check for damaged parts.** Before using any tool, any part that appears damaged should be carefully checked to determine that it will operate properly and perform its intended function. Check for alignment and binding of moving parts; any broken parts or mounting fixtures; and any other condition that may affect proper operation. Any part that is damaged should be properly repaired or replaced by a qualified technician. Do not use the tool if any switch does not turn On and Off properly.
- 16. Guard against electric shock.** Prevent body contact with grounded surfaces such as pipes, radiators, ranges, and refrigerator enclosures.
- 17. Replacement parts and accessories.** When servicing, use only identical replacement parts.
- 18. Do not operate tool if under the influence of alcohol or drugs.** Read warning labels on prescriptions to determine if your judgment or reflexes are impaired while taking drugs. If there is any doubt, do not operate the tool.

19. Using extension cords. When the equipment is connected to an extension cord, use only a properly rated (Amps) one with the proper grounding prong. If used outdoors, make sure the extension cord is rated as such (and is UL approved). This equipment requires the use of an extension cord rated at 12 AWG.

Operation

The Wood Shaper is a vertical, single axle milling machine used for planing, cutting curved surfaces, rabbeting, slotting, and cutting irregular shapes in wood.

Controls



Pre-shaping Adjustments

1. Adjust Hand Wheels (16) to adjust the Leading Trucks (7), or wood fence, to the desired depth of cut.

The leading Truck should be closer to the spindle than the ending truck.

2. Loosen Lock Hand Wheel (211) knob. Adjust the spindle (425) height for the desired cut by turning the Big Hand Wheel (202).

View the height gauge for exact dimensions. Tighten Lock Hand Wheel.

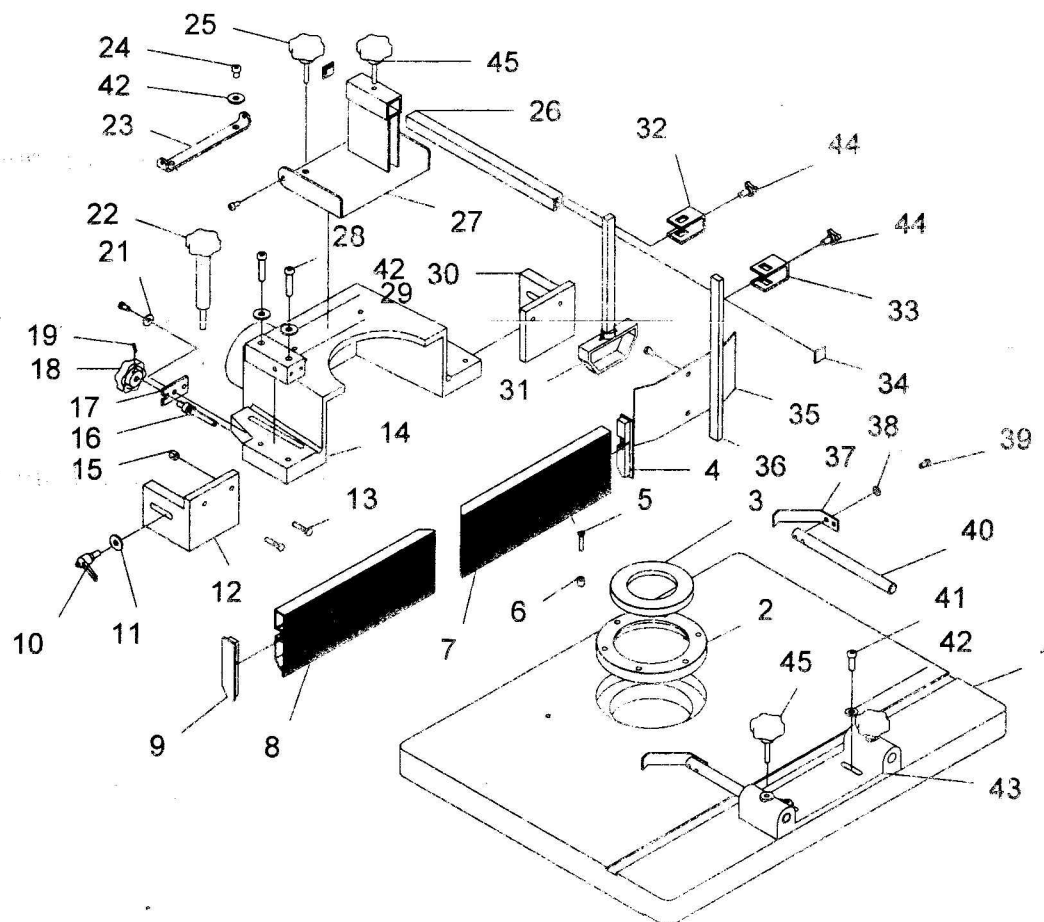
3. Adjust the Press Board (31) to a position over the wood to keep the wood from jumping or moving off the cutting plane.

Shaping

1. Before turning the machine on, move the piece of wood over the cutting plane. Verify ease of movement and proper cutting depth.
2. Move Safety Cover (35) to be in front of Spindle (425).
3. Press the green button of switch (11) to turn machine on.
Wait until the motor is at maximum RPMS before cutting.
4. Press the red button of switch (11) to turn the machine off.

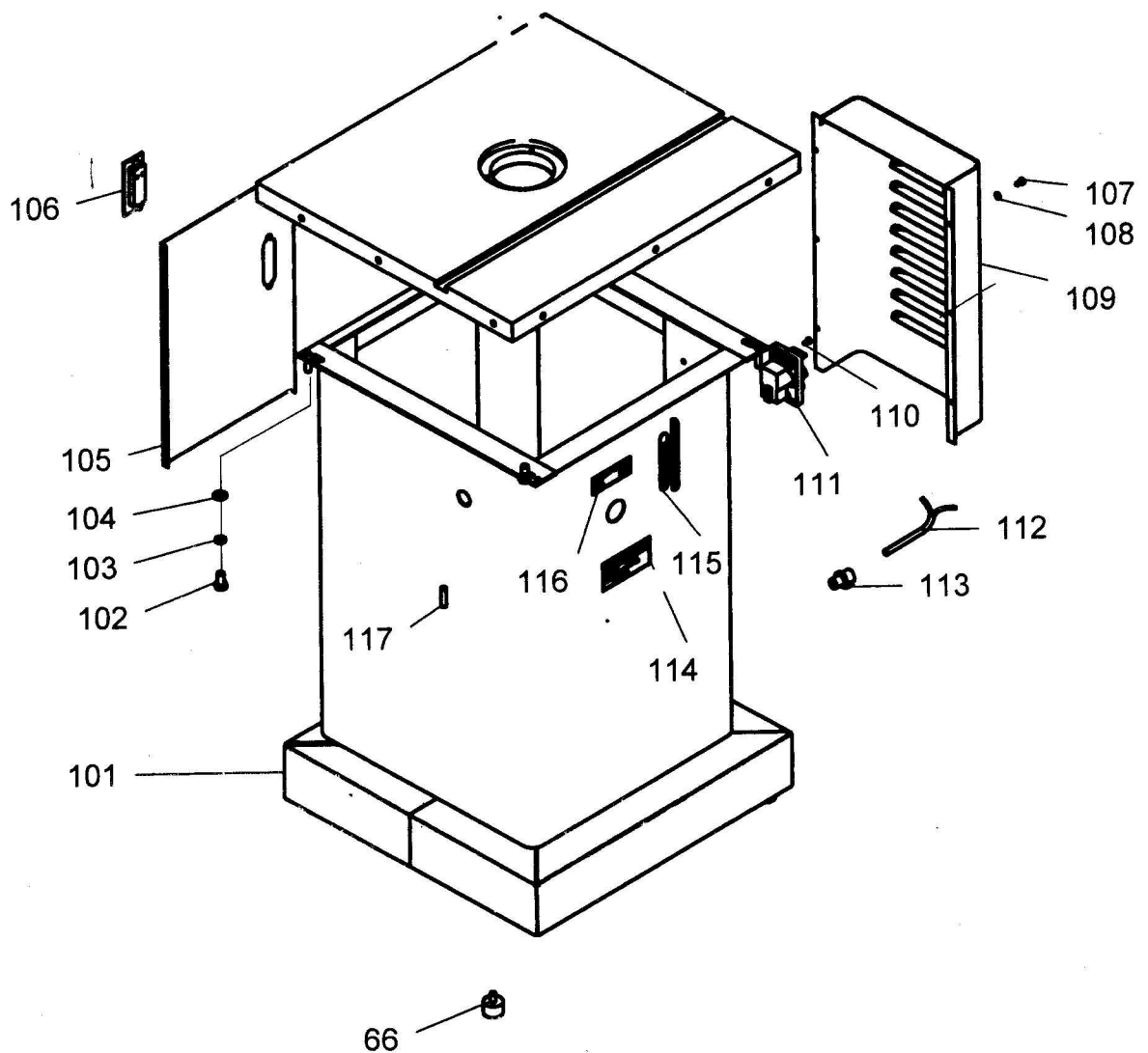
Maintenance

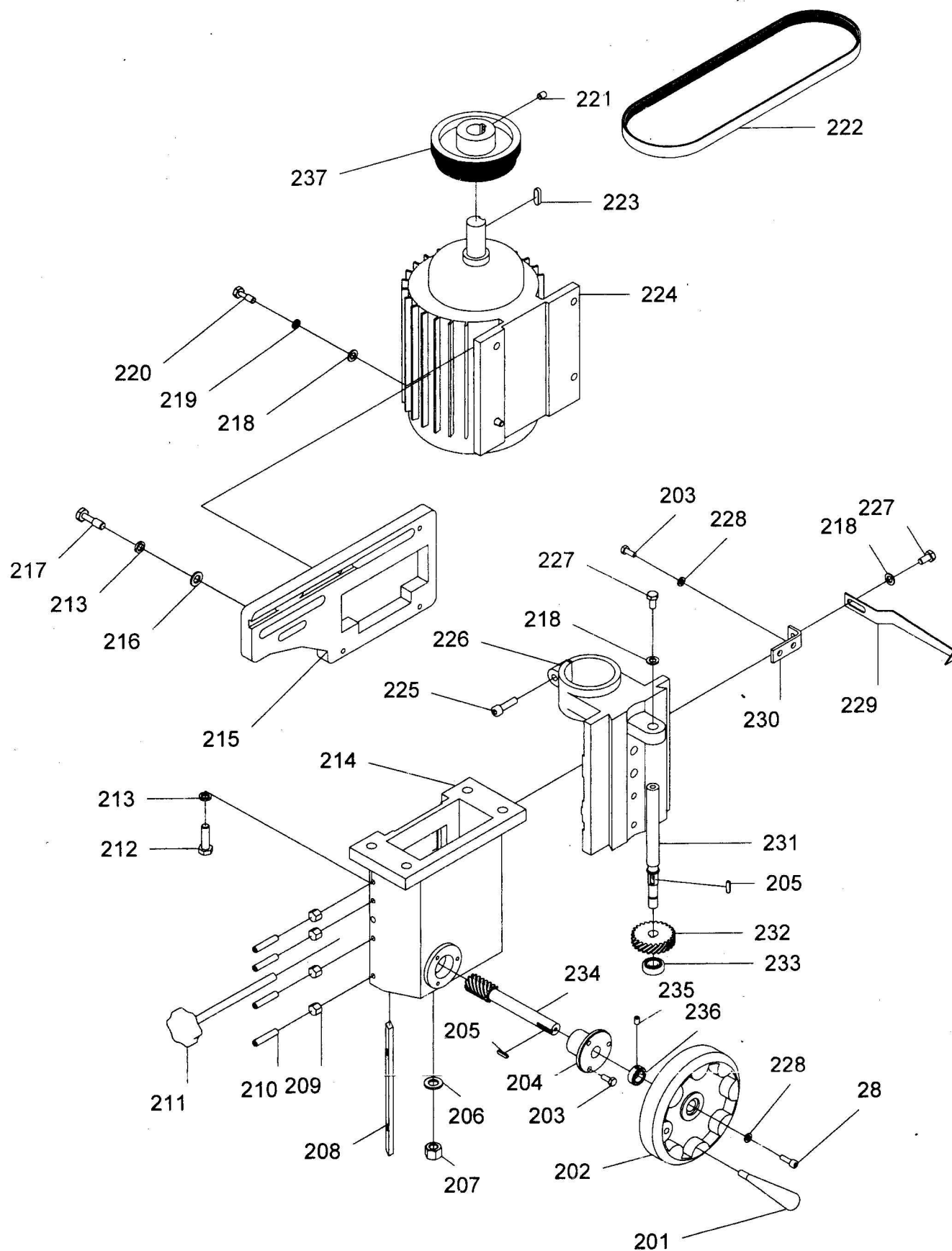
1. Using compressed air, blow clean the machine.
2. Periodically protect exposed metal surfaces and threads with light (spray) oil.
3. Replace drive Belt (90) when tightening of drive belt does not help to keep Spindle from slipping.



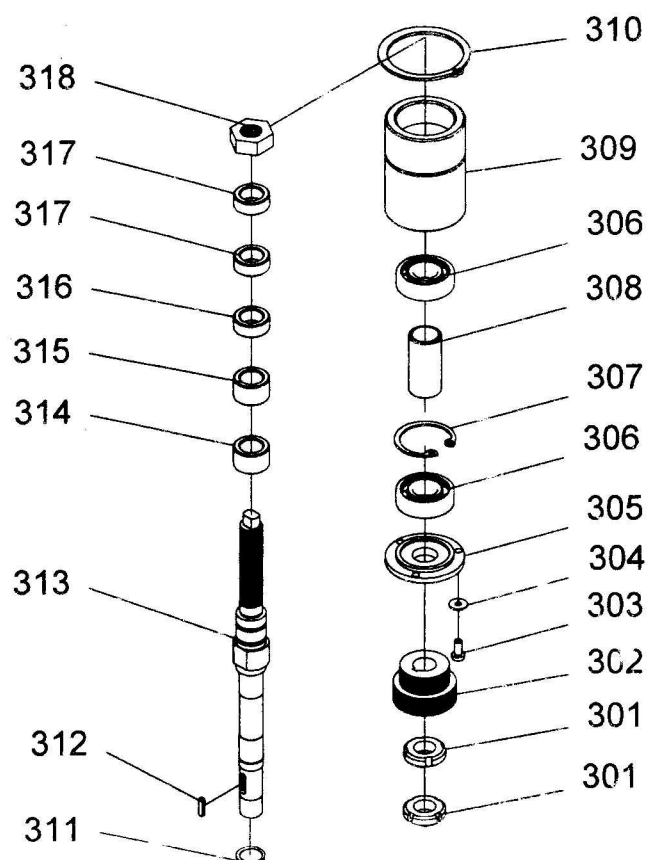
ITEM	DESCRIPTION	QTY	ITEM	DESCRIPTION	QTY
1	WORKING TABLE	1	23	PLATE	1
2	TABLE INSERT	1	24	HEAD SCREW M8*12	2
3	TABLE INSERT 1	1	25	LOCK KNOB	1
4	RIGHT FENCE LID	1	26	POST	1
5	SCREW M5*30	3	27	BRACKET	1
6	NUT M12	3	28	BOLT M8*40	4
7	RIGHT FENCE	1	29	BLOCK	2
8	LEFT FENCE	1	30	RIGHT FENCE MOUNT	1
9	LEFT FENCE LID	1	31	CONTROL PLATE	1
10	HANDLE	3	32	SLEEVE 1	1
11	FLAT WASHER ϕ 8	4	33	SLEEVE 2	1
12	FENCE MOUNT (LEFT)	1	34	POST LID	1
13	SCREW M6*30	4	35	PROTECTIVE GUARD	2
14	MAIN FENCE HOUSING	1	36	POST 1	1
15	MUT M6	4	37	BLOCK II	2
16	FENCE ADJ SCREW	2	38	FLAT WSHR ϕ 6	4
17	PLATE	2	39	SCREW M6*12	4
18	ADJUSTING KNOB	2	40	POLE	2
19	PIN ϕ 3*20	2	41	SCREW M8*25	2
20	HEAD SCREW M6*12	6	42	FLAT WASHER ϕ 8	8
21	WASHER ϕ 6	4	43	BLOCK	1
22	LOCK KNOB	2	44	TRIANGLE HANDLE	2
			45	HANDLE	3

ITEM	DESCRIPTION	QTY	ITEM	DESCRIPTION	QTY
101	STAND	1	110	CSREW M4*16	1
102	BOLT M10*20	4	111	SWITCH	1
103	LOCK WASHER 10	4	112	POWER CORD	1
104	FLAT WASHER 10	4	113	STRAIN RELIEF	1
105	COVER	1	114	SAFETY GLASSES	1
106	LOCK	6		WARNING	
107	PHLD HD SCREW	6	115	SCALE	1
	M5*10		116	LIFTING LABLE	1
108	FLAT WASHER 5	6	117	SET SCREW M8*16	4
109	MOTOR COVER	1	118	RUBBER FOOT	4

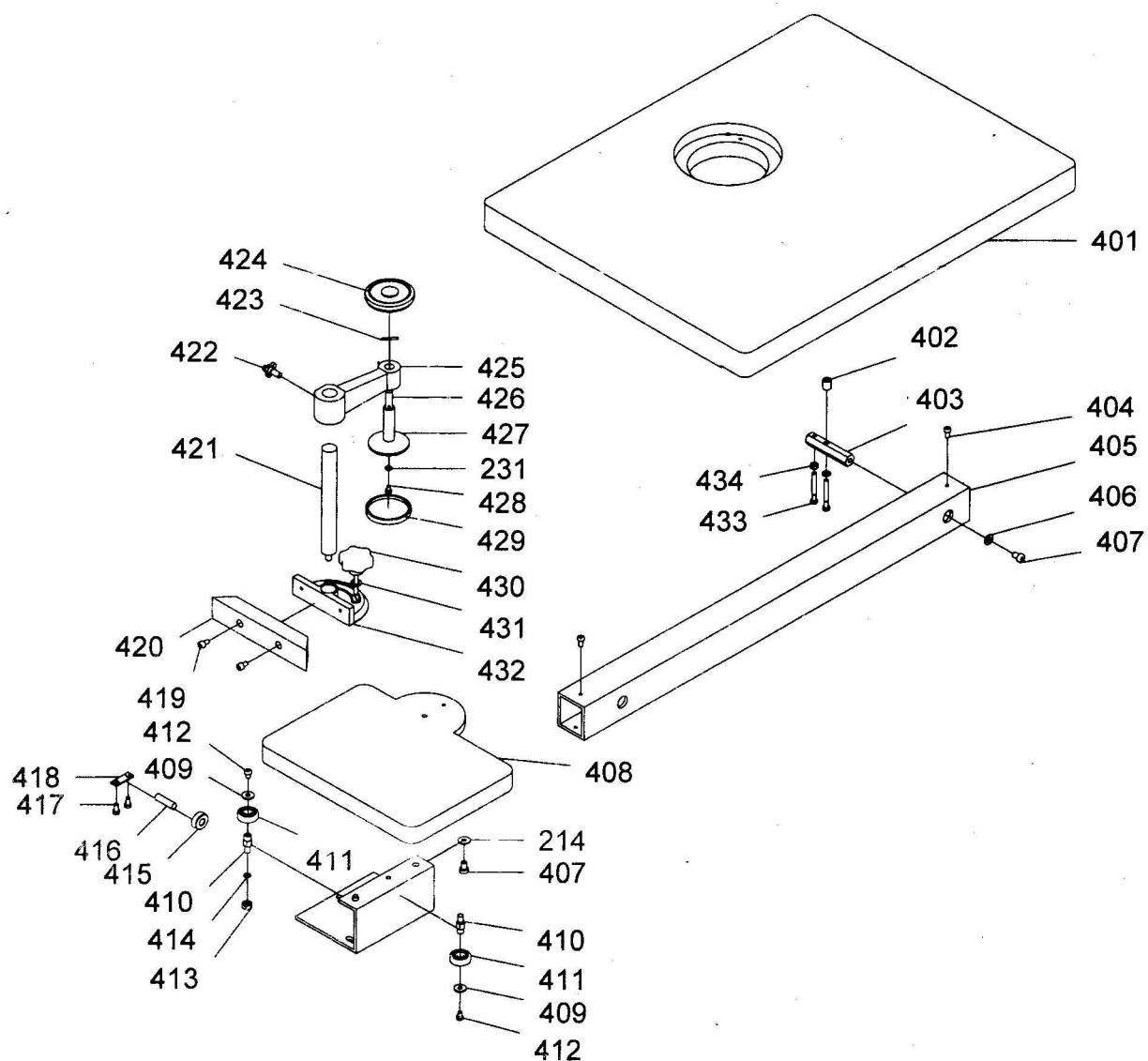




ITEM	DESCRIPTION	QTY
201	HANDLE	1
202	HAND WHEEL	1
203	BOLT M6*15	5
204	SHAFT MOUNT	1
205	KEY 5*5*15	1
206	FLAT WASHER 12	1
207	NUT M12	1
208	GIB	1
209	NUT 8	4
210	SET SCREW M8*35	4
211	HAND KNOB	1
212	BOLT M10*40	4
213	LOCK WASHER 10	6
214	ELEVATION HOUSING	1
215	MOTOR MOUNT PLATE	1
216	FLAT WASHER 10	4
217	BOLT M10*35	2
218	FLAT WASHER	4
219	LOCK WASHER 8	2
220	BOLT M8*25	4
221	SET SCREW M8*10	1
222	BELT	1
223	KEY 8*7*35	1
224	MOTOR	1
225	CAP SET SCREW M8*30	1
226	SPINDLE SLID	1
227	BOLT M8*12	1
228	FLAT WASHER 6	2
229	POINTER	1
230	"L" BRACKET	1
231	LEAD SCREW	1
232	GEAR	1
233	BALL BEARING 51101	1
234	WORM SHAFT	1
235	SET SCREW M6*10	2
236	COLLAR	1
237	PULLEY	1



ITEM	DESCRIPTION	QTY	ITEM	DESCRIPTION	QTY
301	SPANNER NUT	2	310	SNAP RING ϕ 65	1
302	PULLEY	1	311	SNAP RING ϕ 25	1
303	SCREW M6*16	3	312	KEY 5*5*15	1
304	FLAT WASHER ϕ 6	3	313	SPINDLE	1
305	HOUSING CAP	1	314	RUB ROLLAR	1
306	BALL BEARING 6205	2	315	RUB ROLLAR	1
			316	RUB ROLLAR	1
307	SNAP RING ϕ 52	1	317	RUB ROLLAR	2
308	SPACE LONG	1	318	NUT SET	1
309	BEARING HOUSE	1			



ITEM	DESCRIPTION	QTY	ITEM	DESCRIPTION	QTY
401	WORK TABLE	1	418	SHIM	4
402	SLEEVE	2	419	SCREW M6*12	2
403	HEX ROD	2	420	PRESSING BLOCK	1
404	SCREW M6*12	2	421	PRESSING BAR	1
405	GUIDE RAIL	1	422	KNOB	1
406	BIG FLAT WASHER \varnothing 8	2	423	SPRING ROLLOR	1
407	SCREW M8*12	2	424	PRESSING KNOB	1
408	SLIDING WORK TABLE	1	425	LOCK IEVER	1
409	FLAT WASHER \varnothing 6	6	426	PILLAR	1
410	ROLLER SHAFT	6	427	INNER ARC SPACER	1
411	BALL BEARING 6200	6	428	SCREW M5*10	1
412	SCREW M6*12	6	429	PRESSING COLLAR	1
413	NUT M8	3	430	KNOB	1
414	FLAT WASHER \varnothing 8	6	431	FLAT WASHER \varnothing 5	1
415	ROLLER PINION	2	432	MITER BODY	1
416	SMALL SHAFT	2	433	SCREW M6*50	4
417	SCREW M6*12	8	434	NUT M6	2